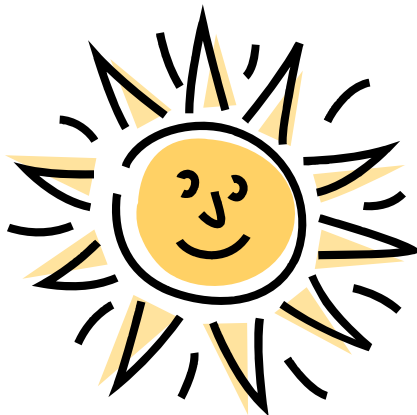


Hello Master Gardeners!

Summers in full swing, along with our normal heat and humidity! It certainly makes the corn grow, but it makes me wilt. Gardening can be tough during the middle of the summer when weeds grow by leaps and bounds, but the heat makes working in the garden a chore.



In this newsletter, we have some ideas to make gardening more bearable during the heat of summer. Try an adjustable hand rake for close weeding or a scuffle hoe for weeding larger areas. Plant an unusual perennial plant like *Astrantia* or *Genista*. Then sit down with a cool jug of refreshing lemon grass tea.

So enjoy the long days of summer. Make sure to visit your local Farmer's Market for some great fresh produce. Enjoy your county fair and this year why not try your hand at exhibiting the flowers and/or fruits from your garden? -Betty Hamata

Not Your Usual Perennials

By Lorraine Urban

The plant world never ceases to amaze me. There are always new and interesting plants to learn about and try in the garden. Here are four plants that I don't very often see in perennial gardens.

Astrantia, common name is Masterwort, is a plant that likes sun, but will grow in partial shade. These are very adaptable plants with attractive dark green leaves. Masterwort does well in the woodland garden with a soil pH between 6 to 7.8. All of the cultivars I found were hardy to Zone 4.

It is a repeat bloomer from late spring to early fall. Cultivars vary from 18-30" tall and have tiny rounded blooms that form a cluster, about 2-3 inches in diameter. The flowers can be used in bouquets or in dried arrangements.

Inside this issue:

Not Your Usual Perennials	1
From the Garden to the Table- Lemon Grass	2
Specialty Garden Tools	3
Penstemon	4
From the Nebraska Statewide Arboretum...	7
2009 International Master Gardener Conference	7
Poppy Mallows for Nebraska Gar- dens	8
Upcoming Volunteer Activities	9

Please Join Us!
**Newsletter Committee
Meeting
July 27th**
6:00-7:00 pm
UNL Extension Office
1206 W. 23rd Street
Fremont, NE.

Join us to brainstorm newsletter article ideas for our June/July issue of the Going & Growing Newsletter. 2009 meeting dates: 0/26

From The Garden To The Table– Lemon Grass

By Bonnie Parrish

Lemon grass, *Cymbopogon citratus* also known as “takrai” in Thailand or “sere” in Indonesia, is a tender perennial herb native to Malaysia and is an important ingredient in South-east Asian, Thai and Vietnamese cooking.

Lemon grass has a mild lemony fragrance and a lemon-citrus type taste. The stalks are too tough to eat, but they can be bruised and chopped to add flavor to fish or poultry sauces and stir fry. Most of the commercial production of lemon grass is in California and Florida. Lemon grass is also used for medicinal purposes.

Grow lemon grass from seed. Or taking a small clump or “bulb” with a few roots from an existing plant. Plant the new division in a small pot with a well-drained soil mix.

Once it has rooted it can be planted in the garden, although it is not win-

ter hardy in Nebraska, or moved to a larger container when it is large enough. Lemon grass has a very extensive root system, so potted plants should be divided yearly.

Lemon grass prefers a sandy-type soil, but likes soil that is evenly moist so a good layer of mulch is a must. It grows up to six feet in height under ideal conditions in the tropics, but only to about three feet in northern climates.

The entire stalk of the grass can be used. Leaf blades should be about 12-inches tall before harvesting. The blades should be sliced very fine and added to soups, where the light lemon flavor blends well with garlic, chives and cilantro. It’s frequently used in curries as well as in seafood soups, and makes a good tea.

Lemon grass is available in ethnic markets, such as Asian and Mexican.

Store fresh lemon grass in the refrigerator in a tightly sealed plastic bag for up to three weeks, or freeze for about six months.

Lemon grass can also be purchased dried or powdered under the name “Sereh Powder”, although it is not a good substitute for fresh herbs. As a medicinal plant, lemon grass is said to aid in digestion, relieve spasms, muscle cramps, rheumatism and headaches.

The zest of one lemon equals two small lemon grass stalks.

Lemon Grass Tea

1/4 cup chopped fresh lemon grass leaves or 2 T dried lemon grass
4 cups boiling water
Sugar to taste

Preheat teapot with boiling water, then discard water. Add lemon grass and boiling water. Steep 8-10 minutes, strain. Serve hot or allow to cool, sweeten to taste, and serve in tall glasses with ice.

Going & Growing Newsletter Contributors:

Rich Apking
Merry Fenton
Betty Hamata
Bonnie Parrish
Joe Richardson
Mary Svoboda
Lorraine Urban

Baked Salmon with Lemon Grass

Paste:

1 stalk lemon grass, outer leaves removed and inner bulb minced
1 1/2 ounces fresh ginger root
3 large cloves garlic, peeled
3 T dark sesame oil
1 1/2 T rice wine vinegar
Salt
Ground black pepper

Filets:

6 salmon filets, 2 pounds
1 T dark sesame oil

To make paste, put all ingredients in a food processor and process until smooth.

Brush filets with oil then place skin down in a baking dish. Spread two tablespoons of the paste on each filet. Cover and refrigerate for two hours.

Heat oven to 400 °F. Bake salmon until opaque, about 12 minutes. Serve immediately.

Specialty Garden Tools

By Rich Apking

Without a few gardening tools our hobby would indeed be difficult. For this issue, I chose to share some of my most favorite tools with you, especially unusual or special purpose tools. In the picture below, left to right, we have an adjustable rake, a dibble, a scuffle hoe, and in front a bulb auger.

Close Hand Weeding

The **adjustable rake** is a smaller version of the spring rake many of us use for raking leaves in the fall. The big advantage to this rake is that it adjusts in width from about two inches to over five inches.

Your control is great, since your hand is very close to the action. It's just great for uncovering those tender shoots in the spring, or moving a little mulch without uprooting or breaking your favorite plant.

An Old Tool Is New

The **dibble** is a modern upgrade on the pointed stick. It's a wonderful tool for planting small bulbs or corms. I use it mainly for planting garlic cloves and onion plants. If you buy sleeved plants, it works good for planting them too.

Quick Weed Control

When I bought this **scuffle hoe**, also called an action hoe, it was entirely on a whim. The thing just looked cool. It wasn't until I used it a few times that I realized what a

great tool it really is. Like most of our garden tools it works best if kept very sharp. Then it's just perfect for cutting off weeds about a quarter to a half inch below the ground. The angle of the tool is comfortable in use, and you can do a lot of weeding in a hurry. It's



Left to right: adjustable rake, dibble, scuffle hoe, and in front a bulb auger.

small and light enough that you have exceptional control and allows you to weed right next to your plants.

Speedy Bulb Planting

I bought my first **bulb auger** when I purchased about 600 tulip bulbs to plant one fall. Much to my surprise, the thing worked great. I planted

all those bulbs in one evening after work. I very foolishly bragged to my older sister about what a great thing it was, and lo and behold it disappeared after one of her visits. Rather than argue, I bought this one, which is built a little stronger and is longer—so not so much bending over.

Now for some non pictured items.

Try Plastic Mulch

"Red Mulch" is a plastic sheet about 4 feet wide and either 30 or 50 feet long. I've used it for years under my tomatoes and peppers. Red plastic mulch increased yield, compared to vegetables grown on black plastic mulch. Like any sheet type mulch, it discourages weeds, conserves moisture, and warms the soil to encourage growth.

Plant Small Seeds with Ease

I've always had problems sowing small seeds, like carrot or dill seeds. I saw a product called a **"SeedMaster"**. It is a small 'V' channel trowel-like tool that has a knob that vibrates the device when you turn it with your thumb. It's adjustable for differing seed sizes, which fall through one at a time, into your prepared trench. You'll be totally surprised how far a packet of carrot seeds will go when you aren't piling them up in your growing trench.

Organize Your Seeds

A couple of years ago Lori Urban and I were talking about the extra seeds we gardeners all seem to ac-

(Continued on page 6)

Penstemon

By Mary Svoboda

Penstemon is a large genus of North American and East Asian plants traditionally placed in the figwort family, *Scrophulariaceae*. However, due to new genetic research they are now placed in the vastly expanded plantain family, *Plantaginaceae*. The common name beardtongue comes from the bearded infertile stamen found in most species.

There are 280 species of wildflowers found in a variety of habitats, ranging from the mountains of Guatemala to the tundras of Canada and Alaska. In addition to the native species, there are over 800 cultivars and hybrids available, including the 1996 Perennial Plant of the Year *P. digitalis* 'Husker Red' introduced by Dr. Dale Lindgren of the University of Nebraska.

Flowers are tubular or funnel-shaped and pollinated by bees, wasps, moths, butterflies, flies, and hummingbirds. Colors include white, yellow (rare), blue, violet, purple, pink, magenta and red.

The most distinctive feature of the genus is the prominent staminode or infertile stamen. The staminode takes a variety of forms in different species. Typically it is a long, straight filament extending to the mouth of the corolla. In some plants it is longer and extremely hairy, giving the general appearance of an open mouth with a fuzzy tongue protruding, inspiring the common name "beardtongue."

Plants have opposite leaves. Most *Penstemons* are herbaceous perennials, while others are shrubs or subshrubs. Heights can range from 4 inches to as much as 3 feet.



'Red Rocks' Penstemon, *P. x mexicali*
A great reblooming Penstemon.

John Mitchell published the first scientific description of *Penstemon* in 1748. Although he only named the plant *Penstemon*, it was later identified as *P. laevigatus*, eastern smooth beardtongue. Linnaeus included the plant in his publication, as *Chelone penstamon*. Altering the spelling to better correspond to the notion that the name referred the unusual fifth stamen Greek "penta-" five).

Mitchell's work was reprinted in 1769, continuing with the original spelling, which was ultimately ac-

cepted as the official form although *Penstamon* continued in use into the 20th century.

Although several more species were found in the 18th century, they continued to be classified in *Chelone*, or turtlehead, genus until 1830. The period of 1810 to 1850 increased the number of known species from 4 to 63, as expeditions traveled through Mexico and the American west. Identified species numbered 100 by 1900.

During this time, seeds began to be offered for sale in Europe. In 813 John Fraser offering 4 species, followed by Flanagan and Nutting offering 9 species in their 1835 catalog. Subsequently many hybrids were developed in Europe.

Field work in more remote parts of Great Basin during the 20th century brought

the total number of known species to over 280. In 1946 the American Penstemon Society was formed to promote both horticultural and botanical interest in the genus.

Members receive the American Penstemon Bulletin twice a year and have access to a yearly seed exchange. For more information visit the APS web site at <http://www.apsdev.org/>

Penstemon are growing in popularity for gardeners around the world. Given the proper conditions,

Not Your Usual Perennials, Continued

(Continued from page 1)

When I saw the common name “Masterwort,” I realized that I have been growing these plants for 5 or 6 years, but wasn’t familiar with the botanical name. My plants have been slow-growing and not bloomed until this year. I don’t remember what cultivar it is, but it looks similar to ‘Buckland’ which is offered, along with ‘Ruby Wedding’ and ‘Moulin Rouge’, by Wayside Gardens.

Genista, commonly called Broom, Dyer’s Broom, Dyer’s Weed, woad waxen, is a shrub, does well in sun or part shade. Slim, bright green leaves and the plant’s upright structure provide a medium-fine texture to the landscape in all seasons. Plants make a good low-growing shrub for poor, dry soil areas.

All parts of the plant, especially its yellow, pea-shaped flowers, are useful in making a yellow dye, which used to be collected by the poor in England and sold to “dyers.”

Cultivars vary greatly in size, *G. tinctoria* reaches 2-3 feet with equal spread, while *G. lydia* ranges from 12-24 inches. Both are hardy to Zone 4. Genistas are very common in California and, in some places,

invasive. High Country Gardens offers both to the species mentioned above.

Knautia, known to Europeans as hedgerow or meadow plant, is related to, and looks a lot like, Scabiosa or pin-cushion flower. It was named after the 17th Century



Bangle Genista
Genista lydia ‘Select’

botanist, Dr. Christopher Knaut (1638-1694).

Knautia prefers a sunny location with well-drained soil (not clay) and soil pH from 5.5 – 7.0. It establishes in clumps which are not long-lived but will self-seed if it likes where it is growing.

“Red Knight” and “Mars Midget”, both crimson colored, are hardy to Zones 5-8. As with a lot of perennials, deadheading the spent blooms will extend the bloom period. You can use the dried blooms in flower arrangements.

Since it blooms from summer to fall, it is a good choice for parking strips, perennial borders, and cottage gardens.

Knautia is available on line at Streambank Gardens or in the Bluestone Perennials catalog.

Verbascum, also known as ornamental mullein, is a hairy-leaved biennial related to common mullein, a weed often found in pastures, ditches, and other low maintenance areas.

However, Verbascum is much more than a “pasture weed.” Zone 5 cultivars such as “Caribbean Crush,” “Southern Charm,” and the “Jackie Series” (pink, apricot, and yellow) can bring large showy flowers to gardens.

Flowers and leaves are grown on long sturdy stalks. Height varies between cultivars, but can be as high as 4 feet or as low as 18 inches. “Blattaria” (pale yellow), “Arctic Summer” (white), and *V. phoeniceum* (purple-pink) are additional cultivars hardy to Zone 4.

Penstemon, Continued

they flourish with little care. However, a lack of consistent winter hardiness and a dislike of wet soil have created problems with use of some of the more showy penstemons.

To get the most satisfaction out of penstemons, they should be used in the garden with consideration for their special characteristics. Most penstemon prefer dry conditions, excellent soil drainage and full sun.

Types suited only for a rock garden should not be put into a perennial border with tall-growing plants that will crowd them out or cover them. Rock garden penstemons comprise the low-growing deciduous species, and the evergreen and shrubs.

If tall penstemons are to be used in a border, it is wise to avoid short-

lived types. They are apt to die after blooming and leave holes in the border. Or if short-lived types are used, choose those that will reseed themselves for the next year.

Certain annual types are used in public parks in large colorful beds for, once they bloom, they continue to bloom until frost cuts them down. Burpee Seed currently sells *Penstemon 'Esprit'*, 24-30" tall with long stalks of red, rose, pink and white bell-shaped flowers.

For a hot, sunny, dry bank, where few garden flowers will grow well, there are many kinds of penstemon which delight. The eastern species are noted for their ability to grow and bloom well in hot, dry places, as are many of the hybrids developed from prairie species.

Penstemons bloom on straight stems that lend themselves particularly well to upright floral arrangements. Curved or distorted stems are good for sweeping-curve arrangements. They do not drop flowers in arrangements, and most will keep as long as 10 days after being cut. Some even longer.

I was personally unfamiliar with penstemons until Jim Kluck, owner of Dublin Nursery, helped me with a flower bed in a very dry, sunny area. The plants are now three years old, have tripled in size, and are covered with gorgeous purple flowers when flowering. Even after the flowers are gone the plants are still attractive and can be left all winter.

Specialty Garden Tools, Continued

(Continued from page 3)

cumulate. I saw a product called a **"Seed Keeper"** in a catalog and thought I'd try it. It is a binder with transparent pouched pages. The pouches have zip locks to keep out moisture, and are sized to fit a seed package.

If you have lost or destroyed your seed packet, proper sized envelopes are included with places to write any pertinent information about your seeds. I've found it keeps me from purchasing seeds I already have. The numerous plastic grocery bags with seed envelopes are slowly, but surely, getting organized.

Plan Color for the Garden

I really like plants, and in the winter

and spring I order plants like a mad man. And true to form I often forget what I've ordered, why I ordered it, and where I planned to plant the item. I have yet to completely plan a garden area, according to color, size, texture, and bloom time. So I tend to move a lot of stuff after seeing it for a season.

Sometimes instead of moving plants I'll just ignore the unsightly ones until someone mentions it, usually a gardening friend. There is, however, a tool that will help me with next year's purchases, it's called a **"Plant Wheel"**. It helps me select plants coordinated by height and color, while also planning for continuous bloom throughout the season.

What I like about it is that it's entirely portable, so not only can I use it to plan catalog orders, I can take it to the nursery and pick out plants that make sense for my garden rather choosing whatever I find.

These are a few specialized tools that help with my gardening. I've purchased them locally at our hardware stores, at the 'big box' stores, from various gardening & tool catalogs, and online. I hope you see something here that helps with your gardening chores.

Happy gardening!

From the Nebraska Statewide Arboretum...

The Nebraska Statewide Arboretum was begun in the 1970s by a small group of people who wanted to create a network of arboretums in Nebraska where plants could be grown and displayed “to enrich lives through the beauty and wonder of plants.” What resulted was an arboretum unlike any other in the world.

- NSA has over 80 affiliate sites in more than fifty Nebraska communities.
- NSA has delivered over \$8 million in grants to more than 245 communities resulting in over 1,000 public landscaping projects involving parks, school, libraries, hospitals, business districts and other places important to community life.

Due to recent changes, NSA is now a program unit of

the Nebraska Forest Service at the University of Nebraska-Lincoln Institute of Agriculture and Natural Resources.

NSA offers monthly podcasts from their web site on topics of seasonal interest. “Long Lived Perennials” is the topic for July 2009. Check it out online at <http://arboretum.unl.edu/> and subscribe for monthly delivery of the podcasts to your iPod or iTunes.

You can help NSA develop a list of long-lived perennials for Nebraska gardens by completing a short survey about the plants that have done well, or not so well, in your gardens. On the NSA homepage, under the podcasting link, click on “In my garden...”. They would love to hear about your favorite perennials.

2009 International Master Gardener Conference

By Lorraine Urban
With pictures by Merry Fenton

Every other year an International Master Gardener Conference is held somewhere in the United States. The 2009 conference was in Las Vegas, March 22–26. The accommodations were fine; the food was good; and the weather was very windy. So windy that bark from the palm trees was strewn all over the parking lot. It was a worthwhile conference and the Las Vegas MGs did a fine job of organizing it.

We heard **Jeff Lowenfels**, author of “No More Cloning Around About Organics,” speak very con-

vincingly about the **importance of organic gardening** and the soil food web; **Sydney Everhart**, a young native lowan told about her **tree canopy research in the Great Smoky Mountains** – the last biological frontier; and **Marvin Miller** told about “**America in Bloom**,” an independent, non-profit organization promoting landscape planting.



Giant “Daffodils” in the Bellagio Indoor Garden

We attended seminars on Container Succulents, Art from Found Objects, Community Gardens, Evolution of Water Efficient Design, Victory Gardens, Plant a Row for the Hungry, and Pollinators and Urbanization, to name some.

(Continued on page 10)

Poppy Mallows for the Home Garden

By Bob Henrickson,
Nebraska Statewide Arboretum

The poppy mallow (*Callirhoe*) is a genus of nine species in the mallow family, native to the prairies and grasslands of North America, that includes some familiar plants like hibiscus, hollyhock, cotton and okra. They're beautiful plants, offering a profusion of brightly colored flowers set among deeply cut foliage.

They generally start flowering in late May through June, and often continue until frost if cut back.

Poppy mallows prefer a hot, sunny, dry situation with well-drained soils. They have no serious insect or disease problems but crown rot may occur in poorly drained soils. Its root is a long-lived corm that can get as big as a turnip!

They can be grown in bare areas as a ground cover or planted among prairie grasses where stems get squeezed down or weave in among other plants. They can be used in border fronts, rock gardens, wild gardens, naturalized areas or meadows. Because of their lanky nature, they are especially useful on slopes or sprawling over stone walls.

Generally poppy mallows will spread in the garden, but will not root at stem nodes. Plants may self-seed in the garden in open ground or under optimum growing conditions. Long tap root gives this plant good drought-tolerance but makes transplanting of established plants difficult.

The prairie winecups or purple poppy mallow, *Callirhoe involucrata*, is the main species seen in gardens, but there are a fair number of other species that deserve to be planted more. I've grown all of following species over the years and they all have been very dependable with bright, cheerful flowers and deep green foliage that remains attractive well into the season.

Purple Poppy Mallow, Prairie Winecups, *Callirhoe involucrata*. A sprawling, ground-hugging plant that can cover an area up to 4' or be planted among prairie grasses or other vertical perennials. Vibrant magenta flowers have a contrasting white eye and are particularly attractive among silver-leaved prairie plants like leadplant, *Artemisia frigida* or rattlesnake master. Cutting back the long stems mid-summer tidies up the plant and encourages new flowers.

Mexican Wine Cups, *Callirhoe involucrata* var. *tenuissima*, has proven to be a showy, cold-hardy plant here in the Great Plains. It blooms profusely in June with clear pink, white-eyed flowers set among very finely cut foliage. It forms a foliage mat quickly in spring, growing from a carrot-like taproot to 15" high and up to 3' wide if given room. It demands lean, well-drained soil and is ideal for hot, sunny rock gardens, spilling over retaining walls. I like it combined with short prairie grasses like blue grama, little bluestem or prairie dropseed.

Pale Poppy Mallow, *Callirhoe alcaeoides*. This prairie native has

more deeply cut, triangular leaves forming a fresh rosette of lacy leaves, more upright than the winecups. The selection 'Logan Calhoun' has showy open-faced 2" white flowers usually blooming several weeks before winecups. Growing to 18" high, it is very drought-tolerant and can take the heat. I like it combined with *Echinacea pallida*, 'Prairie Smoke' skullcap or *Penstemon strictus* and Missouri primrose. This prairie gem needs to be planted in full sun and well-drained soils or raised beds or it can get weak and rangy.

Fringed Poppy Mallow or Standing Winecups, *Callirhoe digitata*. This southern Great Plains native has finely cut, finger-like foliage and slender blue-green stems. It grows from 2-4' high, topped with rose-red, fringed flowers in June. It prefers growing in full sun, dry conditions and lean soils. Its naked stems and bright flowers look particularly attractive combined with *Calylophus serrulatus* 'Prairie Lode', prairie larkspur or in among little bluestem and prairie dropseed.

Bush's Poppy Mallow, *Callirhoe bushii*. This species is rarely seen and is native only to portions of the Great Plains. The deep green leaves are divided into finger-like lobes, forming a bushy plant to 2' high from a thick rootstock. The upward facing, cup-shaped bright magenta flowers bloom in midsummer, later than most poppy mallows. This plant is easily grown in somewhat dry, well-drained soils in full sun or light shade. Like all *Callirhoes*, good drainage is essential so avoid highly organic, moisture-retentive soils.

Upcoming Volunteer Activities

Phone Answering

Volunteers are still needed to help answer phones any weekday from 9 a.m.-Noon, or 12:30-4:30 p.m. You don't need to come for the entire morning or afternoon, but can pick the hours that work best for you. Dates in August and early September are still available. Please call Sarah at 727-2775 to sign up! You'll learn lots!

Newsletter Committee

Become a member of the newsletter committee. The committee meets 4 times per year to brainstorm content for the next newsletters. If you need help choosing a topic we will help you and get you writing! New contributors are always welcome! Our next meeting will be held at the UNL Extension office, Fremont on July 27 and October 26 from 6-7 p.m. This activity will be worth 2 hours of volunteer time per article, and one hour for each meeting attended.

Dodge County Fair

Open Class Entries

Help in the horticulture division to get the entries into the right classes. Very fun and not hard work! Superintendent Helen Langemeier.

Wed. July 29, 1-9 p.m. and/or

Thurs. July 30, 7-8 a.m.

Dodge County Vegetable Booth

Wed. July 20

Help take entries and create an attractive display with the open-class county vegetable entries. Also very fun! Superintendent Dina Anderson (402) 664-3468

Other County Fairs

If you would like to volunteer at your local county fair, please contact the staff below.

Colfax County Fair, July 22-26

Susan Hansen or Aaron Nygren. (402) 352-3821

Burt County Fair, Aug 7-11

John Wilson or Mary Loftis. (402) 374-2929

Washington County Fair, Aug 7-12

Steve Landon or Steve Tonn. (402) 426-9455.

Cuming County Fair, Aug 13-16

Deb Schroeder or Larry Howard. (402) 372-6006

Nebraska State Fair

Help with entry and judging of 4-H horticulture entries at State Fair Park in Lincoln, NE. This will be your last chance to volunteer at State Fair in Lincoln!

August 28

Entries begin at 10:00 a.m.

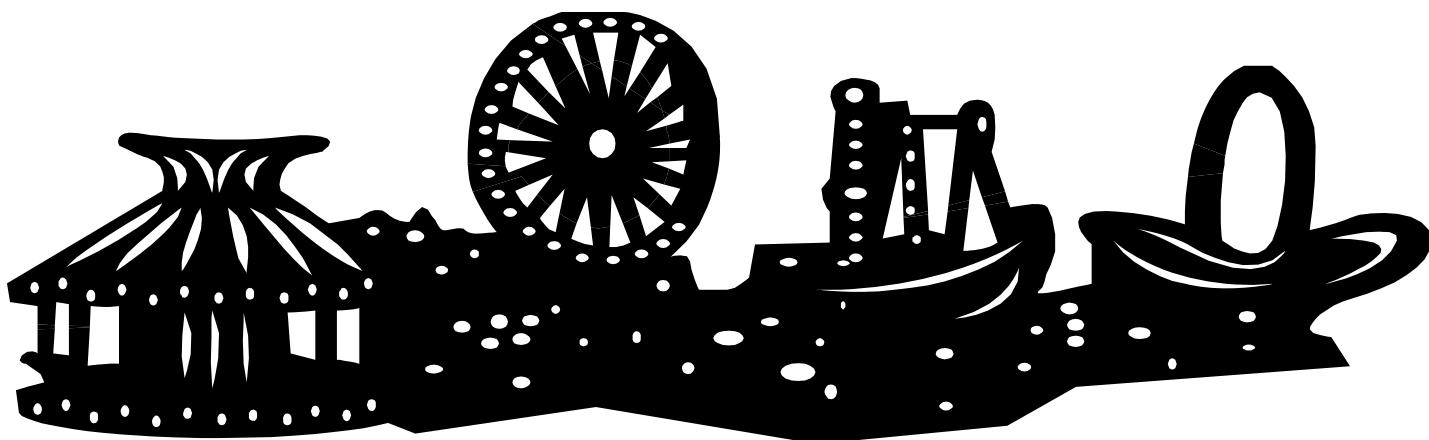
Judging from 12:00-9:00 p.m.

Lunch & dinner provided for volunteers.

August 29

Judging from 8:00 a.m.- Noon

You'll be helping to write comments on each entry, attach ribbons and organize displays. Please let me know the dates and times you would like to volunteer and I will pass along the information to the State Fair Horticultural Exhibits Superintendent.



University of Nebraska– Lincoln
Extension
1206 W. 23rd St.
Fremont, NE 68025

Phone: (402) 727-2775
Email: sbrowning2@unl.edu

We're on the web, at <http://extensionhorticulture.unl.edu>.
Click on 'Master Gardener Program.'



2009 International Master Gardener Conference, Continued

(Continued from page 7)

We learned that there are 95,000 Master Gardeners in the U.S. and Canada; 25,000 of them are new this year. They log over 5,000,000 volunteer hours that are worth \$65 million in effort. And the lives of 4.8 million people are touched by the work of these Master Gardeners. Eight (8) Nebraska MGs attended this conference.

We learned that:

- Community gardens are making a comeback. They act as “community builders” as well as producers of fresh wholesome food.
- Bees are disappearing. Perhaps this is due to pesticides, or environment, or parasites, or interactions between them.
- The study of *Maxomycetes* – plasmodial slime molds – found in the canopies of trees – shows promise for medical advances.

Rather than take the arranged for tours, Merry and I did our own tours of Hoover Dam and Bellagio Casino Gardens. Tours of the Grand Canyon, Death Valley, Red Rock Canyon, and the Eldorado Gold Mine were also available to attendees.



Flower “Snail” in the Bellagio Garden

The next conference will be held in 2011, in Charleston West Virginia, on October 11-14. Mark the date now, and watch for updates in future newsletters.